

Selective Provenance for Datalog Programs Using Top-K Queries

Daniel Deutch Amir Gilad Yuval Moskovitch
Tel Aviv University Tel Aviv University Tel Aviv University
danielde@post.tau.ac.il amirgilad@post.tau.ac.il moskovitch1@post.tau.ac.il

ABSTRACT

Highly expressive declarative languages, such as *datalog*, are now commonly used to model the operational logic of data-intensive applications. The typical complexity of such datalog programs, and the large volume of data that they process, call for result *explanation*. Results may be explained through the tracking and presentation of *data provenance*, and here we focus on a detailed form of provenance (*how-provenance*), defining it as the set of derivation trees of a given fact. While informative, the size of such *full* provenance information is typically too large and complex (even when compactly represented) to allow displaying it to the user. To this end, we propose a novel top-k query language for querying datalog provenance, supporting selection criteria based on tree patterns and ranking based on the rules and database facts used in derivation. We propose an efficient novel algorithm based on (1) instrumenting the datalog program so that, upon evaluation, it generates only relevant provenance, and (2) efficient top-k (relevant) provenance generation, combined with bottom-up datalog evaluation. The algorithm computes in polynomial data complexity a compact representation of the top-k trees which may be explicitly constructed in linear time with respect to their size. We further experimentally study the algorithm performance, showing its scalability even for complex datalog programs where full provenance tracking is infeasible.

1. INTRODUCTION

Many real-life applications rely on an underlying database in their operation. In different domains, such as declarative networking [40], social networks [49], and information extraction [23], it has recently been proposed to use *datalog* for the modeling of such applications.

Consider, for example, AMIE [23], a system for mining logical rules from Knowledge Bases (KBs), based on observed correlations in the data. After being mined, rules are then treated as a datalog program (technically, a syntax of Inductive Logic Programming is used there) which may

be evaluated with respect to a KB of facts (e.g. YAGO [53]) that, in turn, were directly extracted from sources such as Wikipedia. This allows addressing incompleteness of KBs, gradually deriving additional new facts and introducing them to the KB.

Datalog programs capturing the logic of real-life applications are typically quite complex, with many, possibly recursive, rules and an underlying large-scale database. In such complex systems, accompanying derived facts with *provenance* information, i.e. an explanation of the ways they were derived, is of great importance. Such provenance information may provide valuable insight into the system's behavior and output data, useful both for the application developers and their users. For instance, AMIE rules are highly complex and include many instances of recursion and mutual recursion. Furthermore, since AMIE rules are automatically mined, there is an inherent uncertainty with respect to their validity. Indeed, many rules mined in such a way are not universally valid, but are nevertheless very useful (and used in practice), since they contribute to a higher recall of facts. When viewing a derived fact, it is thus essential to also view an explanation of the process of its derivation.

A conceptual question in this respect is what constitutes a “good” explanation. An approach advocated by previous work is to define provenance by looking at derivations of facts, and distinguishing between *alternative* and *joint* use of facts in such derivations. In the context of datalog programs, a notion of explanations that follows this approach is based on *derivation trees* [29]. A derivation tree of an intensional fact t , defined with respect to a datalog program and an extensional database, completely specifies the rules instantiations and intermediate facts jointly used in the gradual process of deriving t . Derivation trees are particularly appealing as explanations, since not only they include the facts and rules that support a given fact but they also describe *how* they support it, providing insight on the structure of inference. A single fact may have multiple derivation trees (alternative derivations), and the set of all such trees (each serving as “alternative explanation”) is the fact *provenance*. Defining provenance as the set of possible derivation trees leads to a challenge: the number of possible derivation trees for a given program and database may be extremely large and even *infinite* in presence of recursion in the program, and may be prohibitively large even in absence of recursion.

We next outline our approach and main contributions in addressing this problem, as well as the challenges that arise in this context.

This work is licensed under the Creative Commons Attribution-NonCommercial-NoDerivs 3.0 Unported License. To view a copy of this license, visit <http://creativecommons.org/licenses/by-nc-nd/3.0/>. Obtain permission prior to any use beyond those covered by the license. Contact copyright holder by emailing info@vldb.org. Articles from this volume were invited to present their results at the 41st International Conference on Very Large Data Bases, August 31st - September 4th 2015, Kohala Coast, Hawaii.

Proceedings of the VLDB Endowment, Vol. 8, No. 12
Copyright 2015 VLDB Endowment 2150-8097/15/08.

Novel query language for datalog provenance. We observe that while full provenance tracking for datalog may be costly or even infeasible, it is often the case that only parts of the provenance are of interest for analysis purposes. To this end, we develop a query language called **selPQL** that allows analysts to specify which derivation trees are of interest to them. A **selPQL** query includes a *derivation tree pattern*, used to specify the structure of derivation trees that are of interest. The labels of nodes in the derivation tree pattern correspond to facts (possibly with wildcards replacing constants), and edges may be regular or “transitive”, matching edges or paths in derivation trees, respectively. A simple use of the patterns is to limit provenance tracking to particular facts of interest; but the language is rich enough to also allow specifying complex features of derivations that are of interest. For instance, in the AMIE example, by viewing derivations that involve integration of data from different sources (e.g. ontologies), one may gain insight into the usefulness of the integration or reliability of obtained facts. From a different perspective, if one ontology is less trustworthy than the other, the application owner may wish to see explanations based only on the more reliable source; etc.

Importantly, and since the number of qualifying derivation trees may still be very large (and in general even infinite), we support the retrieval of a *ranked list of top-k qualifying trees* for each fact of interest. To this end, we allow analysts to assign *weights* to the different facts and rules. These weights are aggregated to form the weight of a tree (our solution supports a rich class of aggregation functions).

Novel algorithm for selective provenance tracking. We then turn to the problem of efficient provenance tracking for datalog, guided by a **selPQL** query. We observe (and experimentally prove) that materializing full provenance (or alternatively grounding of the datalog program with respect to the database), and then querying the provenance, is a solution that fails to scale. On the other hand, discarding partial derivations “on-the-fly” is also challenging, since their inclusion in the answer set may depend on consequent derivation steps (as well as on other derivations which may or may not be ranked higher). Our solution then consists of two main steps:

1. Static (i.e. *independent of the underlying database*) “instrumentation” of the datalog program P with respect to the **selPQL** query (in fact, its tree pattern component p). We introduce a precise definition of the output of this instrumentation (see proposition 4.2), which is a new datalog program P_p that “guide” provenance tracking based on p . Intuitively, P_p satisfies that for every database D , the derivation trees induced by P and D are also induced (up to renaming of relations) by P_p and D , and crucially the trees that follow the pattern p are exactly those that involve particularly marked relations. The fact that a program satisfying this property (for every database) can be effectively computed is non-trivial, and a major challenge here is that P may involve recursion. Our novel solution is based on encoding, using datalog rules, a “require/guarantee” relation for satisfaction of parts of the tree pattern. Namely, for each pair of (relation of P , part of p) we design a novel relation name and corresponding rules whose body relations together “guarantee” satisfaction of the pattern part.

2. Bottom-up evaluation of P_p w.r.t. an underlying database D while generating a compact representation of the top- k relevant trees (of P) for each (relevant) output tuple. Here again, our solution consists of two steps. The first involves computing the top-1 tree side-by-side with bottom-up datalog evaluation. The basic idea here is somewhat inspired by prior work on computing the best derivation *weight* for Context Free Grammars (see section 7), but requires significant efforts to (1) account for datalog and (2) generate a *compact representation* of the tree itself (whose size may be prohibitively large) rather than just its weight. We further design a novel algorithm for computing the *top-k* derivation trees, by exploring modifications of the top-1 tree. Challenges in the design of this algorithm include, among others, (1) the avoidance of generating multiple trees that are the same up to renaming (i.e. correspond to a single tree of P); and (2) avoiding costly materialization of trees.

The final step of the algorithm is then the materialization of *only* the top- k trees based on the compact representation.

Complexity analysis and experimental study. We analyze the performance of our evaluation algorithm from a theoretical perspective, showing that the complexity of computing a compact representation of selected derivation trees is *polynomial in the input database size*, with the exponent depending on the size of the datalog program and the **selPQL** query; the enumeration of trees from this compact representation is then *linear in the output size (size of top- k trees)*. We have further implemented our solution, and have experimented with different highly complex and recursive programs. Our experimental results indicate the effectiveness of our solution even for complex programs and large-scale data where full provenance tracking is infeasible.

2. PRELIMINARIES

We provide necessary preliminaries on datalog and the provenance of output data computed by datalog programs.

2.1 Datalog

We assume that the reader is familiar with standard datalog concepts [1]. Here we review the terminology and illustrate it with an example. A *datalog program* is a finite set of datalog *rules*. A datalog rule is an expression of the form $R_1(\mathbf{u}_1) : -R_2(\mathbf{u}_2) \dots R_n(\mathbf{u}_n)$ where R_i ’s are relation names, and $\mathbf{u}_1, \dots, \mathbf{u}_n$ are sets of variables with appropriate arities. $R_1(\mathbf{u}_1)$ is called the rule’s head, and $R_2(\mathbf{u}_2) \dots R_n(\mathbf{u}_n)$ is called the rule’s body. Every variable occurring in \mathbf{u}_1 must occur in at least one of $\mathbf{u}_2, \dots, \mathbf{u}_n$. We make the distinction between extensional (edb) and intensional (idb) facts and relations. A datalog program is then a mapping from edb instances to idb instances, whose semantics may be defined via the notion of the *consequence operator*. First, the *immediate* consequence operator induced by a program P maps a database instance D to an instance $D \cup \{A\}$ if there exists an *instantiation* of some rule in P (i.e. a consistent replacement of variables occurring in the rule with constants) such that the body of the instantiated rule includes only atoms in D and the head of the instantiated rule is A . Then the consequence operator is defined as the *transitive closure* of the immediate consequence operator, i.e. the fixpoint of the repeated application of the immediate consequence operator.

exports		imports	
Country	Product	Country	Product
France	wine	Cuba	wine
Cuba	tobacco	Mexico	wine
Cuba	coffee beans	Mexico	tobacco
		France	tobacco

dealsWith (edb copy)	
Country _a	Country _b
Mexico	France

Table 1: Database

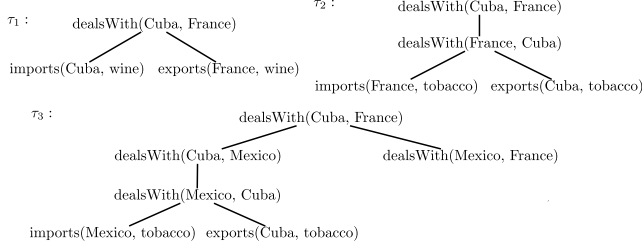


Figure 1: Derivation Trees

Finally, given a database D and a program P we use $P(D)$ to denote the restriction to idb relations of the database instance obtained by applying to D the consequence operator induced by P .

EXAMPLE 2.1. *AMIE [23] is a system for the automatic inference of rules, by identifying “patterns” in a Knowledge Base (KB). Rules of AMIE form a datalog program and are then evaluated with respect to a database instance (which is a KB) to compute an idb instance (which is an extended KB). We consider the program inferred by AMIE based on patterns in YAGO. Among many others, the idb instance includes a binary relation dealsWith, including information on international trade relations (an edb “copy” of this relation appears as well, with rules for copying its content that are omitted for brevity). The program includes the following rule, intuitively specifying that dealsWith is a symmetric relation (ignore for now the numbers in parentheses).*

$r_1(0.8) \text{ dealsWith}(a, b) :- \text{dealsWith}(b, a)$

Many other rules with the dealsWith relation occurring in their head were mined by AMIE, including some additional rules whose validity is questionable (imports and exports are additional binary edb relations):

$r_2(0.5) \text{ dealsWith}(a, b) :- \text{imports}(a, c), \text{exports}(b, c)$

$r_3(0.7) \text{ dealsWith}(a, b) :- \text{dealsWith}(a, f), \text{dealsWith}(f, b)$

The rules r_1, r_2, r_3 form a datalog program (which is a strict subset of the actual program obtained by AMIE).

2.2 Datalog Provenance

It is common to characterize the process of datalog evaluation through the notion of *derivation trees*. A *derivation tree* of a fact t with respect to a datalog program and a database instance D is a *finite* tree whose nodes are labeled by facts. The root is labeled by t , leaves are labeled by edb facts from D , and internal nodes by idb facts. The tree structure is dictated by the consequence operator of the program: the labels set of the children of node n corresponds to an instantiation of the body of some rule r , such that the label

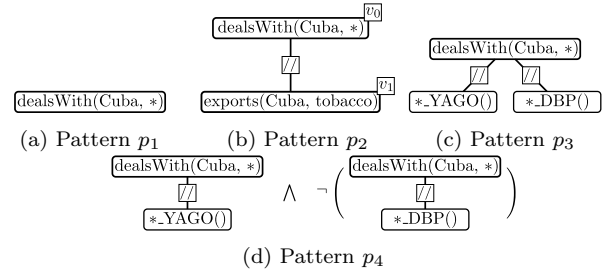


Figure 2: Tree Pattern Examples

of n is the corresponding instantiation of r 's head (we refer to this as an *occurrence* of r in the tree). Given a datalog program P and a database D , we denote by $\text{trees}(P, D, t)$ the set of all possible derivation trees for $t \in P(D)$, and define $\text{trees}(P, D) = \bigcup_{t \in P(D)} \text{trees}(P, D, t)$.

EXAMPLE 2.2. *Three derivation trees for the fact $t = \text{dealsWith}(\text{Cuba}, \text{France})$, based on the program given in Example 2.1 and the example database given in Table 1, are presented in Figure 1. Already in the small-scale demonstrated example there are infinitely many derivation trees for t (due to the presence of recursion in rules); for the full program and database many trees are substantially different in nature (based on different rules and/or rules instantiated and combined in different ways).*

3. QUERYING DATALOG PROVENANCE

We introduce a query language for derivation trees, based on two facets: (1) *boolean criteria* describing derivations of interest, and (2) a *ranking function* for derivations.

3.1 Derivation Tree Patterns

Recalling our definition of provenance as a *possibly infinite set of trees*, we next introduce the notion of *derivation tree patterns*, used to query derivations.

DEFINITION 3.1. *A derivation tree pattern is a node-labeled tree. Labels are either wildcards (*), or edb/idb facts, in which wildcards may appear instead of some constants. Edges may be marked as regular (/) or transitive (/ /), and in the latter case may be matched to a path of any length.*

The boolean operators \neg , \vee and \wedge can also be applied to tree patterns (with the expected semantics).

EXAMPLE 3.2. *Several tree patterns are presented in Figure 2. The pattern p_1 specifies interest in all derivations of facts of the form $\text{dealsWith}(\text{Cuba}, *)$ (any constant may replace the wildcard). The other patterns further query the structure of derivation. Specifically, p_2 specifies that the analyst is interested in derivations of such facts that are (directly or indirectly) based on the fact that Cuba exports tobacco. The patterns p_3 and p_4 are relevant when (omitted) rules integrate two ontologies (YAGO and DBPedia). We use $*_YAGO()$ and $*_DBP()$ ¹ to match all relations from YAGO and DBPedia resp.; then p_3 selects derivations of facts $\text{dealsWith}(\text{Cuba}, *)$ that are based on integrated data*

¹This requires a slight change of the definition of patterns, which is easy to support, to allow * in relation names.

from both sources, and p_4 selects derivations that use facts from YAGO but no fact from DBpedia. Both patterns shed light on the usefulness of integration in this context.

We next define the semantics of derivation tree patterns, i.e. the notion of matching a given derivation tree.

DEFINITION 3.3. Given a derivation tree τ and a derivation tree pattern p , a match of p in τ is a mapping h from the nodes of p to nodes of τ , and from the regular (transitive) edges of p to edges (resp. paths) of τ such that (1) the root of p is mapped to the root of τ , (2) a node labeled by a label l which does not contain wildcards, is mapped to a node labeled by l , (3) a node labeled by a label l which includes wildcards is mapped to a node labeled by l' , where l' may be obtained from l by replacing wildcards by constants, (4) a node labeled by a wildcard can be mapped to any node in τ . (5) If n, m are nodes of p and e is the directed (transitive) edge from m to n , then $h(e)$ is an edge (path) in τ from $h(m)$ to $h(n)$ and (6) for any two edges e_1 and e_2 in p , their corresponding edge/path in τ are disjoint.

DEFINITION 3.4. Given a (possibly infinite) set S of derivation trees and a derivation tree pattern p , we define $p(S)$ (“the result of evaluating p over S ”) to be the (possibly infinite) subset S' consisting of the trees in S for which there exists a match of p . Given a pattern p , a datalog program P and an extensional database D , we use $p(P, D)$ as a shorthand for $p(\text{trees}(P, D))$.

EXAMPLE 3.5. Consider the datalog program P given in Example 2.1, the database instance given in Table 1 and the tree pattern p_2 in Figure 2b. The set $p_2(P, D)$ includes infinitely many derivation trees, including in particular τ_2 and τ_3 shown in Figure 1.

3.2 Ranking Derivations

Even when restricting attention to derivation trees that match the pattern, their number may be too large or even infinite, as exemplified above. We thus propose to rank different derivations based on the rules and facts used in them. We allow associating weights with the input database facts as well as the individual rules, and aggregating these weights. Different choices of weights and aggregation functions may be used, capturing different interpretations. We support a general class of such functions via the notion of an *ordered monoid*, which is a structure $(M, +, 0, <)$ such that M is a set of elements, $+$ is a binary operation which we require to be commutative, associative, and monotone non-increasing in each argument, i.e. $x + y \leq \min(x, y)$ (with respect to the structure’s order), 0 is the neutral value with respect to $+$, and $<$ is a total order on M .

DEFINITION 3.6. A weight-aware datalog instance is a triple (P, D, w) where w maps rules in P and tuples in D to elements of an ordered monoid $(M, +, 0, <)$. The monoid operation is referred to as the aggregation function.

EXAMPLE 3.7. We demonstrate multiple choices of monoid and the corresponding applications.

Derivation size To rank derivation trees by their size we may use the monoid $(\mathbb{Z}^-, +, 0, <)$, and set the weight of every rule to be -1 ; then the weight of a derivation tree is the negative of its size.

Derivation (total) confidence Another way to rank derivations is to associate confidence values with rules. In AMIE, such confidence values reflect the rules’ support in underlying data. Here we use the monoid $([0, 1], \cdot, 1, <)$. This is the example that will be used in the sequel; rules weights are specified next to them and facts weights are all 1.

Derivation minimal confidence One could alternatively impose a preference relation on trees based on the confidence in their “weakest” rule/fact (so that top trees are those whose least trusted component is best trusted among all trees). This can be captured by the $([0, 1], \min, 1, <)$ monoid.

Access control Consider the case where each fact/rule is associated with a different access control credential, e.g. one of $A = \{\text{Top secret (T)}, \text{Secret (S)}, \text{Confidential (C)}, \text{Unclassified (U)}\}$. We may rank trees based on their overall credential (typically defined as the maximum credential of fact/rule used), so that non-secret trees are preferable as explanations. Here we use $(A, \min, U, <)$, where $T < S < C < U$.

DEFINITION 3.8. The weight of a derivation tree τ with respect to a weight-aware datalog instance, denoted, abusing notation, as $w(\tau)$, is defined as $\sum_r w(r) + \sum_t w(t)$ where the sums (performed in the weights monoid) range over all rules and tuples occurrences in τ .

EXAMPLE 3.9. Using the weight function w defined by the confidence value associated with rules (appearing next to them, in brackets) and aggregating via multiplication, the weights of exemplified trees (Figure 1) are $w(\tau_1) = 0.5$, $w(\tau_2) = 0.5 \cdot 0.8 = 0.4$ and $w(\tau_3) = 0.7 \cdot 0.8 \cdot 0.5 = 0.28$.

Last, we may define top- k queries and their results.

DEFINITION 3.10. Given a pattern p , a weight-aware datalog instance (P, D, w) and a natural number k , we use $\text{top-}k(p, P, D, w)$ to denote the set containing for each fact t in $P(D)$ the k derivation trees of t that are of highest weight (ties are decided arbitrarily) out of those in $p(P, D)$. We use TOP-K to denote the problem of finding $\text{top-}k(p, P, D, w)$ given the above input.

EXAMPLE 3.11. In general, there are infinitely many finite derivation trees for the fact $\text{dealWith}(\text{Cuba}, \text{France})$ (due to the recursive rule r_1), as well as infinite derivations which we algorithmically avoid generating (see Section 5). The top-2 results w.r.t. the pattern given in Figure 2b are τ_2 and τ_3 in Figure 1 with weights of 0.4 and 0.28 respectively. Note that τ_1 does not match the pattern.

Note. There is an intuitive correspondence between our weighted model and that of *semiring provenance* [29]. In the model of [29], two abstract operations are used: multiplication (in a semiring) is used to combine provenance of facts participating in a single derivation, and semiring addition is used to combine provenance of multiple derivations of the same fact. Our aggregation function ($+$ of the monoid) thus intuitively has the same role as semiring multiplication, while our counterpart of the semiring addition is fixed to be the top- k operation (which allows us to support a concise presentation of results). Indeed, our above examples of aggregation functions were all shown to be useful as provenance (but the problem of computing top- k derivation trees based on such function was not previously considered). We

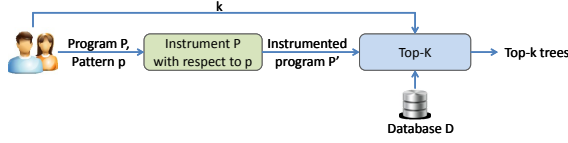


Figure 3: High-level Framework

further note that one could consider a *probabilistic interpretation* of weights (this requires some care to guarantee that the semantics indeed induces a probability distribution), but (as also noted in the context of semiring provenance), a probabilistic semantics would not allow to capture ranking by arbitrary monoids such as e.g. the “derivation minimal confidence” or “access control” examples above.

In the following sections we propose a two-step algorithm for solving TOP-K, as explained in the Introduction and depicted in Figure 3. The algorithm will serve as proof for the following theorem.

THEOREM 3.12. *For any Program P , pattern p and database D , we can compute the top- k derivation trees for each fact matching the root of p in $O(k^3 \cdot |D|^{O(|P|^{w(p)})} + |out|)$ time where $w(p)$ is the pattern width (i.e. the maximal number of children of a node in p) and $|out|$ is the output size.*

The worst case time complexity is polynomial in the database size with exponential dependency on the program size (which is typically much smaller), double exponential in the pattern width (which is typically even smaller), and linear in the output size.

4. PROGRAM INSTRUMENTATION

We now present the first step of the algorithm for solving TOP-K, which is instrumenting the program with respect to the pattern. We first present an algorithm for a single pattern instrumentation, and then generalize it to Boolean combinations of patterns.

4.1 A single pattern

We first define relation names for the output program, and then its rules.

New relation names. We say that a pattern node v is a *transitive child* if it is connected with a transitive edge to its parent. For every relation name R occurring in the program and for every pattern node v we introduce a relation name R^v . If v is a transitive child we further introduce a relation name R^{v^t} . Intuitively, derivations for facts in R^v must match the sub-pattern rooted by v ; derivations for R^{v^t} must include a sub-tree that matches the sub-pattern rooted by v . These will be enforced by the generated rules, as follows.

New rules. We start with some notations. Let v be a pattern node, let v_0, \dots, v_n be the immediate children of v . Given an atom (in the program) $atom$, we say that it *locally matches* v if the label of v is $atom$, or the label of v may be obtained from $atom$ through an assignment A mapping variables of $atom$ to constants or wildcards (if such assignment exists, it is unique). We further augment A so that

a variable x mapped to a wildcard, is now mapped to itself (Intuitively, this is the required transformation to the atom so that a *match with the pattern node is guaranteed*). Overloading notation, we will then use $A(\beta)$, where β is a rule body, i.e. a set of atoms, to denote the set of atoms obtained by applying A to all atoms in β .

Algorithm 1: Instrumentation w.r.t. tree pattern

```

input : Weighted Program  $P$  and a pattern  $p$ 
output: “Instrumented” Program  $P_p$ 

1 foreach pattern node  $v \in p$  do
2   Let  $v_0, \dots, v_n$  be the immediate children of  $v$ ;
3   foreach rule  $[R(x_0, \dots, x_m) : -\beta]$  in  $P$  do
4     if  $R(x_0, \dots, x_m)$  locally-matches  $v$  through partial
       assignment  $A$  then
5       Let  $(y_0, \dots, y_m) := A(x_0, \dots, x_m)$ ;
6       if  $v$  is a leaf then
7         Add  $[R^v(y_0, \dots, y_m) : -A(\beta)]$  to  $P_p$ ;
8       else
9         foreach  $\beta' \in ex(A(\beta), \{v_0, \dots, v_n\})$  do
10          Add  $[R^v(y_0, \dots, y_m) : -\beta']$  to  $P_p$ ;
11      if  $v$  is a transitive child then
12        foreach  $\beta' \in tr - ex(\beta, v)$  do
13          Add  $[R^{v^t}(x_0, \dots, x_m) : -\beta']$  to  $P_p$ ;
14      foreach rule  $[R^v(y_0, \dots, y_m) : -\beta]$  for transitive  $v$  do
15        Add  $[R^{v^t}(y_0, \dots, y_m) : -\beta]$  to  $P_p$ ;
16      HandleEDB ();
17 Clean failed rules in  $P_p$ ;
18 return the union of rules in  $P$  and  $P_p$ ;

```

Algorithm 1 then generates a new program, instrumented by the pattern, as follows. For brevity we do not specify the weight of the new rules: they are each simply assigned the weight of the rule from which they originated, or 0 (neutral value of the monoid) if there is no such rule. The algorithm traverses the pattern in a top-down fashion, and for every pattern node v it looks for rules in the program whose head locally matches v (lines 3-4). For each such rule it generates a new rule as follows: if v is a leaf (lines 6-7), then intuitively this “branch” of the pattern is guaranteed to be matched and we add rules which are simply the “specializations” of the original rule, meaning that we apply to their body the same assignment used in the match.

Otherwise (lines 8-10), we need derivations of atoms in the body of the rule to satisfy the sub-trees rooted in the children of v . To this end we define the set of “expansions” $ex(atoms, \{v_0, \dots, v_n\})$ as follows. Consider all one-to-one (but not necessarily onto) functions f that map the set $\{v_0, \dots, v_n\}$ to the set $atoms = \{a_0, \dots, a_k\}$. Each such function defines a new set of atoms obtained from $atoms$ by replacing atom $a_i = R(x_0, \dots, x_m)$ by $R^{v_j}(x_0, \dots, x_m)$ if $f(v_j) = a_i$ and v_j is not a transitive child, or by $R^{v_j^t}(x_0, \dots, x_m)$ if v_j is a transitive child (atoms to which no node is mapped remain intact). We then define $ex(atoms, \{v_0, \dots, v_n\})$ as the set of all atoms sets obtained for some choice of function f . In line 10 the algorithm generates a rule for each set in these sets of atoms. Intuitively, each such rule corresponds to alternative “assignment of tasks” to atoms in the body, where a “task” is to satisfy a sub-pattern (see Example 4.1).

The algorithm thus far deals with satisfaction of the sub-tree rooted at v , by designing rules that propagate the satis-

```

[r'_1]dealsWithv_0(Cuba, b):-dealsWithv_1(b, Cuba)
[r'_2]exportsv_1(Cuba, tobacco):- exports(Cuba, tobacco)

```

Figure 4: Two rules of the instrumented program

faction of the sub-trees rooted at the children of v to atoms in the bodies of relevant rules. However if the current pattern node v is *transitive* (lines 11-13), then more rules are needed, to account for the possibility of the derivation satisfying the tree rooted at v only in an indirect fashion. A possibly indirect satisfaction is either through a direct satisfaction (and thus for every rule for $R^v(\dots)$ we will have a copy of the same rule for $R^{v^t}(\dots)$, lines 14-15), or through (indirect) satisfaction by an atom in the body. For the latter, we define $tr - ex(atoms, v)$ as the set of all atoms sets obtained from $atoms$ by replacing a single atom $R(x_0, \dots, x_m)$ in $atoms$ by $R^{v^t}(x_0, \dots, x_m)$ (and keeping the other atoms intact), and add the corresponding rules (line 13). Then the function **HandleEDB** adds rules for nodes that locally match edb facts, copying matching facts into the new relations $T^v(\dots)$ and $T^{v^t}(\dots)$. The final step of the algorithm is “cleanup” (line 17), removing unreachable rules.

EXAMPLE 4.1. Consider the program P given in Examples 2.1, and the tree pattern shown in Figure 2b, where v_0 is the root node in p_2 and v_1 is the leaf. Two out of the rules of the output program are shown in Figure 4, and we next illustrate their generation process. Since all rules in P locally match v_0 through the assignment $A = \{a \leftarrow Cuba, b \leftarrow *\}$, v_0 is not a leaf and $\{dealsWith^{v_1}(b, Cuba)\}$ is the only β' obtained for rule r_1 and $ex(A(dealsWith(b, a)), v_1)$, we have that in line 10 the algorithm adds the rule r'_1 . Intuitively derivations for facts in $dealsWith^{v_0}(\dots)$ must match the sub-pattern rooted by v_0 . Then derivations for facts in $dealsWith^{v_1}(\dots)$ must include a sub-tree that matches the sub-pattern rooted by v_1 , and generated rules for $dealsWith^{v_1}(\dots)$ enforce that (since a *dealsWith* atom cannot satisfy v_1) one of the atoms in the body of a used rule will be derived in a way eventually satisfying v_1 . Rule r'_2 is added by **HandleEDB** since $exports(a, b)$ locally matches v_1 .

The instrumented program satisfies the following fundamental property. Given an atom $R(\dots)$, $R^v(\dots)$ or $R^{v^t}(\dots)$ we define its *origin* to be $R(\dots)$, i.e. the atom obtained by deleting the annotation v or v^t (if exists). For a derivation tree τ we define $origin(\tau)$ as the tree obtained from τ by replacing each atom by its origin and pruning branches added due to the function **HandleEDB** (“copying” edb facts).

We now have:

PROPOSITION 4.2. Let P_p be the output of Algorithm 1 for input which is a program P and pattern p with root v_0 . For every database D , we have that:

$$trees(P, D) = \bigcup_{\tau \in trees(P_p, D)} origin(\tau) \quad (1)$$

$$p(P, D) = \bigcup_{t=R^{v_0}(\dots)} \bigcup_{\tau \in trees(P_p, D, t)} origin(\tau) \quad (2)$$

$$w(origin(\tau)) = w(\tau) \quad \forall \tau \in trees(P_p, D) \quad (3)$$

We refer to v and v^t in $R^v(\dots)$ and $R^{v^t}(\dots)$ as *annotations*. Intuitively, the first part of the proposition means that for

every database, P_p defines the same set of trees as P if we ignore the annotations (in particular we generate the same set of facts up to annotations); the second part guarantees that by following the annotations we get exactly the derivation trees that interest us for provenance tracking purposes; and the third part guarantees that the weights are kept. This will be utilized in the next step, where we evaluate the instrumented program while retrieving relevant provenance.

Complexity and output size. Given a datalog program P of size $|P|$ and a pattern p , the algorithm traverses the pattern, and for each node $v \in p$ iterates over the program rules. Let $w(p)$ be the width of p , i.e. the maximal number of children of a node in p . The maximal number of new rules the algorithm adds is $O(|P|^{w(p)})$. The exponential dependency on the pattern width (which is small in practical cases) is due to the need to consider all “expansions”. Furthermore, we next show that a polynomial dependency on the program and pattern is impossible to achieve (proof deferred to the online version [22]).

PROPOSITION 4.3 (LOWER BOUND). *There is a class of patterns $\{p_1, \dots\}$ and a class of programs $\{P_1, \dots\}$, such that $w(p_n) = O(n)$, $|P_n| = O(n)$ and there is no program P'_n of size polynomial in n that satisfies the three conditions of Proposition 4.2 with respect to P_n, p_n .*

Optimizations. The bound we have established on the instrumented program size is only a worst case one, realized when e.g. all pattern nodes match all program rules. To improve performance in practice, we employ further optimizations that simplify the instrumented program (thus reducing the time of the top-k computation that follows). A particular such optimization relates to the existence of constants in facts that label the pattern nodes. Recall that the algorithm assigns corresponding constants in generated rules. When these constants appear in labels of non-transitive nodes (i.e. nodes not connected to their parents through transitive edges), our optimization then “propagates” the assignment of constants in a bottom-up manner, thus generating rules that are more specific to assignments that will eventually lead to valid derivations. Additionally, for non-transitive leaves labeled by edb facts, the algorithm leads to generation of rules that simply copy the content of an edb relation to an idb relation; our optimization avoids this redundant step.

4.2 Boolean combinations of patterns

Algorithm 1 allows intersection of a single pattern with a program. We next explain how to use (modifications of) the algorithm to account for boolean combinations of patterns, i.e. negation, conjunction, and disjunction. The time complexity and output program size remain polynomial in the size of the original program, with exponential dependency on the size of the pattern (the exponent is multiplication of the individual size of patterns, in the case of conjunction).

Negation. The algorithm for intersecting a negation of a pattern is similar to Algorithm 1 with some modifications, as follows. We use relation names R^{-v} and R^{-v^t} for every relation name R in the program and for every pattern node v . Derivations for R^{-v} should not match the sub-pattern rooted by v and derivations for R^{-v^t} should not

include a descendant that matches the sub-pattern rooted by v . We then extend the idea of “expansion set” to define $neg - ex(atoms, \{v_0, \dots, v_n\})$ where $atoms$ is a set of atoms and the v_i ’s are pattern nodes as follows: if $|atoms| \geq n$, then $neg - ex(\dots)$ is the set of all atoms sets obtained from $atoms$ by replacing, for each v_i , every atom $R(x_0, \dots, x_m)$ in $atoms$ by $R^{v_i}(x_0, \dots, x_m)$, if v_i is a transitive node and $R^{v_i}(x_0, \dots, x_m)$ otherwise. If $|atoms| < n$ then $neg - ex(\dots)$ is the set that contains only the set $atoms$. Then, in the case where $R(\dots)$ locally-matches v (line 4), if v is a leaf, we do not add a derivation rule for R^v since we want ignore derivation that match v . Otherwise (in line 10), we add for each $\beta' \in neg - ex(A(\beta), \{v_0, \dots, v_n\})$ the rule $R^{v'}(y_n, \dots, y_m) : -\beta'$. Intuitively, a derivation that does not match sub-pattern rooted by v , in the case where the root $r(\dots)$ locally-matches v , either has less than n children in the derivation, where n is number of the children of v , or the derivation rooted by at least one of $R(\dots)$ ’s children does not match one of the children of v , which is captured by the $neg - ex(\dots)$ set. In addition, for any rule $R(\dots) : -\beta$ in P , when $R(\dots)$ does not locally-match v , we add the rule $R^{v'}(\dots) : -\beta$. For the case where v is a transitive child (line 11) we modify the new rules body to be $neg - ex(A(\beta), \{v\})$. Finally, instead of adding rules for edb atoms that locally-match v , the function **HandleEDB** adds the rules $T^{v'}(x_0, \dots, x_m) : -T(x_0, \dots, x_m)$ and $T^{v''}(x_0, \dots, x_m) : -T(x_0, \dots, x_m)$ for each edb atom $T(x_0, \dots, x_m)$ that does not locally-matches v .

Disjunction and Conjunction. Disjunction of patterns may be performed by repeatedly intersecting the original program with each of the disjuncts (in arbitrary order), accumulating the obtained rules into a single program. As for conjunction, we again perform repeated intersection with the conjuncts, but this time use the output of each intersection step as the input for the next step.

5. FINDING TOP-K DERIVATION TREES

The second step of the algorithm is finding top- k derivation trees that conform to the pattern, based on the instrumented program and now also the input database. We next describe the algorithm for top- k ; then we will present a heuristic optimization.

The algorithm operates in an iterative manner. We start by explaining the algorithm for finding the top-1 derivation. The generation of the top-1 qualifying tree is done alongside with bottom-up standard (provenance-oblivious) evaluation of the datalog program with respect to the database. We then extend the construction to top- k for $k > 1$.

5.1 Top-1

Algorithm 2 computes the top-1 derivation in a bottom-up manner. Each entry in the data structure $DTable$ represents the top-1 derivation tree of a fact t , and contains the fact itself, its top-1 derivation weight, and pointers to the entries in the table corresponding to the derivation trees of the “children” of t in the derivation. Starting with a set of all edb facts (with empty trees) in $DTable$ (line 1), in each iteration, the algorithm finds the set of facts that can be derived via facts in $DTable$ using a single application of a rule in P (line 3). For each such candidate we compute its best derivation out of those using facts in $DTable$ and a single rule application (this is done by a procedure called **Top**).

The fact for which the maximal (in terms of weight) such derivation is found is added to $DTable$ (Line 4). Finally, the algorithm returns the entries in $DTable$ of facts that match the root node v_0 of the pattern.

Algorithm 2: Top-1

input : Weighted Datalog Program P , Database D
output: Top-1 tree for facts of the form $R^{v_0}(\dots)$

- 1 Init $DTable$ with $(t, 0, null)$ for all $t \in D$;
- 2 **while** $DTable$ changes **do**
- 3 Let $Cand$ be the set of all facts derived via facts in $DTable$ and are not in it;
- 4 Add $[\arg \max_{t \in Cand} \text{Top}(t, DTable, P)]$ to $DTable$
- 5 **return** the entries of all $e \in DTable$ s.t. the fact t of e is of the form $R^{v_0}(\dots)$;

EXAMPLE 5.1. Consider the two rules given in Example 4.1, and the database D shown in Table 1. Algorithm 2 first initializes $DTable$ with the edb atoms from D , each with its weight (in this case all weights are 1). Then, in lines 2-4, the algorithm finds the set of facts that can be derived via the facts in $DTable$. In the first iteration the fact $t_3 = exports^{v_1}(Cuba, tobacco)$ can be derived with weight 1 using the edb fact $t_1 = exports(Cuba, tobacco)$ and the rule denoted r_2' in Example 4.1. Other facts can be derived in the first iteration but t_3 is the fact with maximal weight. The algorithm thus adds $(t_3, 1, \{t_1\})$ to $DTable$, where t_1 is a pointer to the entry of t_1 in $DTable$. In the next iteration, the algorithm can derive the fact $t_4 = dealsWith^{v_1}(France, Cuba)$ using t_3 and the edb fact $t_2 = imports(France, tobacco)$ with overall weight of 0.5. When t_4 is selected in Line 4 (other facts may be chosen due to ties), the algorithm adds $(t_4, 0.5, \{t_2, t_3\})$ to $DTable$. After t_4 is added to $DTable$, the fact $t_5 = dealsWith^{v_0}(Cuba, France)$ can be derived with overall weight of $0.5 \cdot 0.8 = 0.4$, and $(t_5, 0.4, \{t_4\})$ is added to $DTable$.

5.2 Top-k

The algorithm for TOP-K computes the top- i derivations for each fact $t \in P_p(D)$ in a bottom-up manner for $2 \leq i \leq k$. For each i it essentially repeats the procedure of Algorithm 2, but starting with $DTable$ consisting of the top- $(i-1)$ trees, i.e. τ_t^j for all $t \in P_p(D)$ and $j < i$. A subtlety is that different trees in $P_p(D)$ may have the same origin in $P(D)$, thus computing top- k using the instrumented program should be done carefully in order to avoid generating the same tree (up to annotations) over and over again.

To this end, we say that a derivation tree τ_t for a fact t is a *top- i candidate*, if one of the following holds: (i) τ_t uses at least one “new” fact that was added in the i ’th iteration or (ii) the last derivation step in τ_t is different from the last derivation step in τ_t^j for all $1 \leq j < i$, such that $origin(\tau_t) \neq origin(\tau_t^j)$. Given the top- $(i-1)$ derivation trees, to compute i ’th best tree for each fact we compute in a bottom up manner top- i candidates that can be derived from facts in $DTable$ using a single rule application. Then we select the candidate τ_t with maximal weight (out of candidates computed for all facts) and add it to a new entry t^i in $DTable$. The step of computing the i ’th best tree terminates when there are no more new facts to add to $DTable$. To find the top- k derivations we may simply compute the top- i for each $1 \leq i \leq k$. After the k ’th iteration

DTable contains a compact representation the top- k derivation trees. The enumeration of top- k facts for each fact may then simply be done by pointer chasing.

Overall Complexity. The algorithm for TOP-K computes for each $1 \leq i \leq k$ the top- i derivation trees for each fact. For each i , the computation of the top- i trees consists of at most $DTable$ iterations, each polynomial in $DTable$ with exponent $|P|^{w(p)}$. A subtlety is in the verification that two compactly represented trees do not have the same origin: we note that a recursive such comparison may be performed in time that is polynomial in $DTable$ with the exponent depending on the maximal tree width (maximal number of children of a tree node), which in turn depends only on the program size. Next, $DTable$ contains at most k entries for each fact $t \in P_p(D)$ where P_p is the instrumented program given the program P and pattern p . The number of facts $t \in P_p(D)$ is at most $|D|^{|P_p|} = |D|^{(|P|^{w(p)})}$, where $|D|$ is the extensional database size, thus on the i 'th step, the size of $DTable$ is bounded by $i \cdot |D|^{(|P|^{w(p)})}$. Therefore the time complexity of the i 'th step is $O(i^2 \cdot |D|^{O(|P|^{w(p)})})$. The complexity of computing the top- k derivation trees is therefore

$$\sum_{i=1}^k O(i^2 \cdot |D|^{O(|P|^{w(p)})}) = O(k^3 \cdot |D|^{O(|P|^{w(p)})})$$

Finally, generating the top- k trees from $DTable$ is linear in the output size, and thus the overall complexity of TOP-K is $O(k^3 \cdot |D|^{O(|P|^{w(p)})} + |out|)$, where $|out|$ is the output size.

5.3 Alternative heuristic top-k computation

An alternative approach for finding top- k derivations is based on ideas of the algorithm for k shortest paths in a graph [18]. The basic idea is to obtain the i 'th best derivation tree of a fact t by modifying one of the top- $(i-1)$ derivation trees of t . Each node u with children u_0, \dots, u_m in a derivation tree τ for a fact $t \in P_p(D)$, corresponds to an instantiation of a derivation rule r in P_p . Given a node $u \in \tau$, a *modification* of u in τ is using a different instantiation to derive u , i.e. using different derivation rule $r' \in P_p$ or a different assignment to the variables in r s.t. for the obtained tree τ' it holds that $origin(\tau) \neq origin(\tau')$. We say that two modifications are different if for their results τ_1 and τ_2 satisfy $origin(\tau_1) \neq origin(\tau_2)$.

Given a derivation tree τ , we denote by $\tau_{u,r,\sigma}$ the derivation tree obtained by modifying u in τ using r and σ . We define $\delta(u, r, \sigma) = w(\tau) - w(\tau_{u,r,\sigma})$. Intuitively, $\delta(u, r, \sigma)$ is the “cost” of the modification. Note that the i 'st best derivation tree can be obtained by a modification of any one of the top- $(i-1)$ trees. Given the top- $(i-1)$ derivation trees for the fact t , the next best derivation can be computed as follows: traverse each one of the top- i trees τ in a top-down fashion, compute the cost of all possible different modifications (without recomputing trees that were already considered; this can be done by tracking the rules and assignment used for each modification), and find the modification of minimal cost. The algorithm for top- k computes, for each output fact, the top- k derivation trees as described above, and terminates when we find top- k derivation or when there are no more modifications to apply on the trees found by the algorithm. Note that the consideration of modifications can be done without materializing the derivation trees, but

rather only using $DTable$. A subtlety is that a fact t may have multiple occurrences in a derivation tree τ , however it appears only once in $DTable$. Thus, modifying the entry of t in $DTable$ would result in modifying the sub-trees rooted at all occurrences of t (instead of modifying a subtree rooted at one occurrence of t). To avoid these modifications, we generate a new copy of all the facts in the path from the root of τ to t (including t) for each modification of t 's sub-tree.

6. IMPLEMENTATION AND EXPERIMENTS

We have implemented our algorithms in a system prototype called **selP** (for “selective provenance”, demonstrated in [15]). The system is implemented in JAVA and its architecture is depicted in Figure 3: the user feeds the system with a datalog program and a **selPQL** query, and the instrumented program is computed and fed, along with an input database, to the TOP-K component. This component is implemented by modifying and extending IRIS [31], a JAVA-based system for in-memory datalog evaluation. Users may then choose a tuple of interest from the output DB and view a visualization of the top- k qualifying explanations (according to the pattern) for the chosen tuple.

We have conducted experiments to examine the scalability and usefulness of the approach, in various settings. We next describe the dedicated benchmark (including both synthetic and real data) developed for the experiments, and then the experimental results.

6.1 Evaluation Benchmark

We have used the following datasets, each with multiple **selPQL** queries, and for increasingly large output databases. The weights in the reported results are all elements of the monoid $([0, 1], \cdot, 1, <)$; we have experimented with all other monoids given in Example 3.7, but omit the results for them since the observed effect of monoid choice was negligible.

1. **IRIS** We have used the non-recursive datalog program and database of the benchmark used to test IRIS performance in [31]. The program consists of 8 rules and generates up to 4.26M tuples; weights have been randomly assigned in the range $[0, 1]$.
2. **AMIE** We have used a recursive datalog program consisting of rules mined by AMIE [23], automatically translated into datalog syntax, with weights assigned by AMIE and reflecting rule confidence. The underlying input database is that of YAGO [53]. The program consists of 23 rules (many of which involve recursion and mutual recursion) for Information Extraction that generate up to 1.2M tuples.
3. **Explain** We have used a variant of the recursive datalog program described in [3], as a use-case for the “explain” system, see discussion of related work (arithmetic operations were treated through dedicated relations, and aggregation was omitted). The database was randomly populated and gradually growing so that the output size is up to 1.17M tuples, and weights have been randomly assigned in the range $[0, 1]$.
4. **Transitive Closure**. Last, we have used a recursive datalog program consisting of 3 rules and computing Transitive Closure in an undirected weighted graph. The database was randomly populated to represent undirected fully connected weighted graphs, yielding output sizes of up to 1.7M tuples.

Baseline algorithms. To our knowledge, no solution for evaluation of top- k queries (or tree patterns) over datalog provenance has been previously proposed. To nevertheless gain insight on alternatives, we have tested two “extreme” choices: (1) standard, semi-naive evaluation with no provenance tracking, using IRIS implementation; and (2) compact representation of full provenance, based on the notion of equations systems from [29], where for each idb fact there is an equation representing its dependency on other idb facts and on edb facts, with additional optimizations that allow for “sharing” of identical parts between different equations.

All experiments were executed on Windows 7, 64-bit, with 8GB of RAM and Intel Core Duo i7 2.10 GHz processor.

6.2 Experimental Results

Figure 5 presents the execution time of standard semi-naive evaluation and of selective provenance tracking for the four datasets and for different `seLPQL` queries of interest (fixing $k = 3$ for this experiments set). Full provenance tracking has incurred execution time that is greater by order of magnitude, and is thus omitted from the graphs and only described in text.

In Figure 5a, the results for the IRIS dataset are presented for 4 different patterns: (p_1) binary tree pattern with three nodes without transitive edges and (p_2) with two transitive edges, (p_3) three nodes chain pattern with two transitive edges, and (p_4) six node pattern with three levels and four transitive edges. The pattern width and structure unsurprisingly has a significant effect on the execution time, but the overhead with respect to seminaive evaluation was very reasonable: 38% overhead w.r.t. the evaluation time of seminaive even for the complex six-node pattern and only 3% - 21% for the other patterns. The absolute execution time is also reasonable: 56–65 seconds for the different patterns and for output database of over 4.2M tuples (note that for this output size, the execution time of standard semi-naive evaluation is already 53 seconds. In contrast, generation of full provenance was infeasible (in terms of memory consumption) beyond output database of 1.6M tuples, taking over 5 minutes of computation for this size).

As explained above, the program we have considered for the AMIE dataset is much larger and more complex. Full provenance tracking was completely infeasible in this complex settings, failing due to excessive memory consumption beyond output database of 100K tuples. Of course, the complex structure leads to significantly larger execution time also for semi-naive and selective provenance tracking. It also leads to a larger overhead of selective provenance tracking, since instrumentation yields an even larger and more complex program. Still, the performance was reasonable for patterns of the flavor shown as examples throughout the paper. We show results for the AMIE dataset and 9 different representative patterns. 5 patterns without any constants (only wildcards): (p_5) a single node pattern, (p_6) a 2-node pattern with a regular edge and (p_7) with a transitive edge, (p_8) a binary 3-node pattern with regular edges, and (p_9) with one transitive edge. The other 4 patterns are (p_i^*) for all $6 \leq i \leq 9$, where each (p_i^*) has the same nodes and edges of (p_i), but with half of the wildcards replaced by constants. The results are shown in Figure 5b. We observe that the “generality” of the pattern, i.e. the part of provenance that it matches, has a significant effect on the performance. For the “specific” patterns p_i^* , the computation time and over-

head was very reasonable: the computation time for 1.2M output tuples was only 44.5 seconds (1.3 times slower than seminaive) for p_6^* . For p_7^* and the same number of output tuples it took 62 seconds (less than 2 times slower than seminaive), 44.6 seconds (1.3 times slower than seminaive) for p_8^* and 105 seconds (3.2 times slower than seminaive) for p_9^* . The patterns containing only wildcards lead to a larger instrumented program, which furthermore has more eventual matches in the data, and so computation time was greater (but still feasible). the computation time for 1.2M output tuples was less than a minute (and 61% overhead w.r.t. seminaive in average) for p_5 , less than 2 minutes (3.5 times slower than seminaive) for p_6 , 2.6 minutes (4.8 times slower) for p_7 , and less than 2 and 2.9 minutes (3.6 and 5.4 times slower) for p_8 and p_9 respectively.

In Figure 5c we present the results for the TC dataset and 4 different patterns: (p_{10}) a single node, (p_{11}) 3-nodes binary tree pattern with regular edges, (p_{12}) 3-nodes chain pattern with 2 transitive edges, and (p_{13}) binary tree pattern with three nodes and 2 transitive edges. We observe a non-negligible but reasonable overhead with respect to semi-naive evaluation (and the execution time is generally smaller than for the AMIE dataset). The execution time for 1.7M output tuples for p_{10} was 31 seconds (and 56% overhead with respect to seminaive in average), 33 seconds for p_{11} (1.8 times slower than seminaive in average), 74 seconds for p_{12} (4 times slower) and 82 seconds for p_{13} (4.5 times slower than seminaive). Here full provenance tracking was extremely costly, requiring over 6.5 hours for output database size of 1.7M tuples.

Figure 5d displays the results for the “explain” dataset. We considered 3 different patterns: (p_{14}) a single node, (p_{15}) a 3-nodes binary tree pattern with regular edges and (p_{16}) a 2-node pattern with a transitive edge. The computation time for 1.16M output tuples was less than 3.2 minutes (7% overhead w.r.t seminaive) for p_{14} , 3.3 minutes (10% overhead w.r.t seminaive) for p_{15} and 4.4 minutes (85% overhead w.r.t the evaluation time of seminaive) for p_{16} . Full provenance tracking has required over 2 hours even for an output database size of 115K.

From top-1 to top- k . So far we have shown experiments with a fixed value of $k = 3$. In Figure 6 we demonstrate the effect of varying k , using the TC dataset and fixing the pattern to be p_{10} . The overhead due to increasing k is reasonable, due to our optimization using the heuristic algorithm for TOP-K (after top-1 trees were computed): about 6%, 13%, and 21% average overhead for top-3, top-5 and top-7 respectively with respect to top-1 execution time. Similar overheads were observed for other patterns and for the other datasets. Our optimization was indeed effective in this respect, outperforming the non-optimized version with a significant gain, e.g. average of 64% for $k = 3$, 77% for $k = 5$ and 82% for $k = 7$ (and again the trend was similar for the other patterns and datasets).

Discussion. Recall that the algorithm consists of two steps: program instrumentation and top- k evaluation. The instrumentation step is extremely fast (less than 1 second in all experiments), since it is independent of the database. A crucial factor affecting the performance of the top- k step is the complexity of the obtained instrumented program, which in turn is highly dependent on the size and complexity of

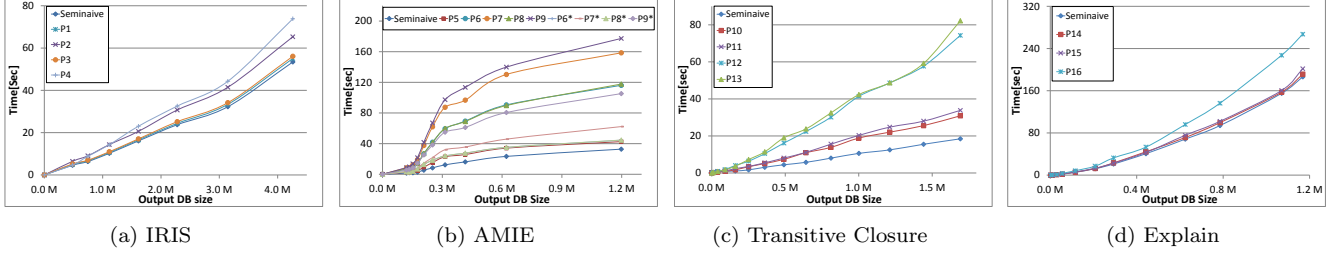


Figure 5: Time of computation as a function of DB size

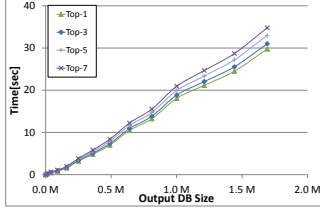


Figure 6: Varying K (Transitive Closure Dataset)

the pattern and of the original program). As observed in the experiments, “simple” patterns (small, containing constants rather than wildcards) lead to smaller programs and good performance, while more complex patterns can lead to meeting the lower bound of Prop. 4.2, and consequently to a greater overhead (yet, unlike full provenance tracking, execution time was still feasible even for the complex programs and patterns we have considered). We note that the optimizations outlined in section 4 have indeed improved the algorithm’s performance by as much as 50%, due to reducing the number of rules.

7. RELATED WORK

We next overview multiple lines of related work.

Data provenance models. Data provenance has been studied for different data transformation languages, from relational algebra to Nested Relational Calculus, with different provenance models (see e.g. [6, 29, 28, 24, 35, 11, 55, 7, 19]) and applications [54, 42, 50, 41, 26], and with different means for efficient storage (e.g. [5, 9, 46, 19]). In particular, semiring-based provenance for datalog has been studied in [29], and a compact way to store it, for some class of semirings, was proposed in [17]. However, no notion of selective provenance was proposed in this work. Consequently, (1) the resulting structure is very complex and difficult to understand (it is not geared towards presentation, thus there is no support of ranking or selection criteria), and (2) as we have experimentally showed, tracking full datalog provenance fails to scale.

Selective provenance for non-recursive queries. There are multiple lines of work on querying data provenance, where the provenance is tracked for non-recursive queries (e.g. relational algebra or SQL). Here there are two approaches: one that tracks full provenance and then allows

the user to query it (as in [34, 32]), and one that allows on-demand generation of provenance based on user-specified criteria. A prominent line of work in the context of the latter is that of [27, 25], where the system (called Perm) supports SQL language extensions to let the user specify what provenance to compute. Three distinct features in our settings are (1) the presence of *recursion* (we support recursive datalog rather than SQL), (2) the use of *tree patterns* to query derivations (which is natural for datalog), and (3) the support of ranking of results. These differences lead to novel challenges and consequently required novel modeling and solutions (as explained in the Introduction and in the description of the technical content).

Explanation for deductive systems. There is a wealth of work on explaining executions for deductive DBMSs. For instance, in [3] the authors present an explanation facility called “explain” for CORAL, a deductive database system. It allows users to specify subsets of rules as different “modules”, and then to set provenance tracking “on” or “off” for each module. For the chosen modules, the system maintains a record of *all instantiations* of rules that have been generated during the program execution. This is a counterpart of our notion of full provenance, since all derivation trees may be obtained from this structure. Once full provenance is tracked, one may analyze it (e.g. using further CORAL queries), or browse through it using a dedicated Graphical User Interface. In contrast to our work, this line of work focuses on analyzing *the full provenance*, and cannot be used to specify in advance the structure of derivations that should be tracked (in-advance specification is limited to the coarse-grain specification of modules). As we have shown, tracking full provenance is infeasible for large-scale data and complex programs. Indeed, experiments in [3] are reported only for a relatively small scale data (up to 30K rule instantiations, which implies less than 30K tuples in the output database). Consequently, we focus on static instrumentation that allows to avoid full provenance tracking. This then leads to the need for a *careful design of a declarative language (and corresponding algorithms) for specifying selective provenance tracking, such that the language is rich enough to express properties and ranking functions of interest, while allowing for feasibility of instrumentation (which was not addressed in [3])*. Indeed, **selPQL** allows the specification of expressive queries through the combination of tree patterns and ranking, while still allowing for efficient instrumentation. *These major distinctions in the problem setting also naturally imply that our technical development is novel.* The same distinctions apply to other works in this

context, such as the debugging system for the LDL deductive database presented in [51]. A feature that is present in [51] and absent here is the ability to query *missing* facts, i.e. explore why a fact was not generated. Incorporating such feature (e.g. to find *ranked* explanations for absence of facts) is an intriguing direction for future work.

Program slicing. In [10, 47] the authors study the notion of program slicing for a highly expressive model of functional programs and for Nested Relational Calculus, where the idea is to trace only relevant parts of the execution. While the high-level idea is similar to ours, and the transformation languages they account for are more expressive, our focus here is on supporting provenance for programs whose *output data* is large (in contrast, the output size for the programs in the experiments of [10, 47] is much smaller than in our experiments). We have thus chosen datalog as a formalism, leading to our tree-based language for patterns, to our theoretical complexity guarantees (which naturally could not be obtained for arbitrary functional programs), and to our experimental study supporting large-scale output data. Importantly, our ranking mechanism and top-k computation are also absent from this line of work.

Workflow provenance. Different approaches for capturing workflow provenance appear in the literature (e.g. [14, 13, 2, 30, 20, 52, 43]), however there the focus is typically on the control flow and the dataflow between process modules, treating the modules themselves and their processing of the data as black boxes. A form of “instrumenting” executions in preparation for querying the provenance is proposed in [4], but again the data is abstracted away, the queries are limited to reachability queries and there is no ranking mechanism.

Context Free Grammars. Analysis of the different parses of Context Free Grammars (CFGs) has been studied in different lines of work. In [38] the author proposes an algorithm for finding the top-1 weight of a derivation in a weighted CFG; other works have studied the problem of finding top-k parses of a given string (where, unlike in our case, the derivation size is bounded) in a probabilistic context free grammar. In [12] the authors study the problem of querying the space of parse trees of strings for a given probabilistic context free grammar, using an expressive query language, but focus on computing probabilities of results, where the probability is obtained by summation over all possible parse trees satisfying a pattern.

There are technical similarities between datalog and CFGs; but perhaps the most significant conceptual difference is that in datalog there is a separation between the program and the underlying data, which has no counterpart in CFGs. In particular, we have shown that it is essential for the algorithm performance that we avoid grounding the program (which is the equivalent of full provenance generation) and instead instrument it without referring to a particular database instance. These are considerations that are of course absent when working with CFGs. This means that no counterpart of our novel instrumentation algorithm (or of the key Proposition 4.2) appears in these works. Then, the top-k trees computation requires again a novel algorithm and subtle treatment of different cases. We have highlighted some of the novel challenges in this respect in the Introduction.

Probabilistic XML. Different works have studied models and algorithms for representing and querying probabilistic distributions over XML documents (see e.g. [36, 37, 39]). Top-k queries over probabilistic XML was studied in e.g. [44, 8, 39]. A technical similarity is in the use of tree patterns for querying a compactly represented set of trees, each associated with a probability value (the counterpart of weights in our model). However our different motivation of querying datalog provenance is then reflected in many technical differences. First, the separation between the program and the underlying data and the need for instrumentation that is independent of the data (as explained in the Introduction and in the discussion of CFGs above) is also absent from models for probabilistic XML, and leads to novel challenges and a novel instrumentation algorithm, which also significantly affects the further development for top-k computation (due to the need to avoid generation of trees that are duplicates up to “instrumentation annotations”). An additional difference is due to our use of a general weight function rather than probabilities. We further note that beyond the difference in the model, the *problem* typically considered for probabilistic XML is different than ours. The problem typically studied in these works is that of finding the probability of an “answer” (e.g. a match), or the top-k such answers based on the answers probabilities. The difference is that the probability of an answer is defined as a *sum over all possible worlds* (e.g. all possible trees in which this match appears), where we are computing a *maximum* (or top-k) over the possible trees. This is a different problem with different motivation and different techniques for solutions. Furthermore, for most realistic models this problem becomes $\#P$ -hard in general (while ours is PTIME), and various restrictions which are not imposed in our case are required in the context of probability computation to allow for tractability.

Markov Logic Networks and other probabilistic models. The combination of highly expressive logical reasoning and probability has been studied in multiple lines of work. These include Markov Logic Networks [48, 33, 45] which may be expressed as a first-order knowledge base with probabilities attached to formulas, and probabilistic datalog where probabilities are attached to rules (e.g. [21, 16]). However, the focus in these lines of work is on the problem of *probabilistic inference*, i.e. computing the probability of a fact or formula (by summing over all possible worlds in which the fact appears/the formula is satisfied); to our knowledge, no counterparts of our query language or techniques were studied in these contexts. In contrast, the various formulations of probabilistic inference typically lead to very high complexity, with solutions that involve approximation algorithms based on sampling.

8. CONCLUSION

We have presented in this paper **selPQL**, a top-k query language for datalog provenance, and an efficient algorithm for tracking selective provenance guided by a **selPQL** query. We have showed that the algorithm incurs polynomial data complexity and have experimentally studied its performance for various datalog programs and **selPQL** queries. There are many intriguing directions for future work, including further optimizations and incorporating considerations such as diversification and user feedback.

Acknowledgements. This research was supported by the Israeli Science Foundation (grant No. 1636/13) and the Broadcom Foundation and Tel Aviv University Authentication Initiative.

9. REFERENCES

- [1] S. Abiteboul, R. Hull, and V. Vianu. *Foundations of Databases*. Addison-Wesley, 1995.
- [2] A. Ailamaki, Y. E. Ioannidis, and M. Livny. Scientific workflow management by database management. In *SSDBM*, pages 190–199, 1998.
- [3] T. Arora et al. Explaining program execution in deductive systems. In *DOOD*, pages 101–119, 1993.
- [4] Z. Bao, S. B. Davidson, and T. Milo. Labeling recursive workflow executions on-the-fly. In *SIGMOD*, pages 493–504, 2011.
- [5] Z. Bao et al. Efficient provenance storage for relational queries. *CIKM*, pages 1352–1361, 2012.
- [6] O. Benjelloun et al. Databases with uncertainty and lineage. *VLDB J.*, 17:243–264, 2008.
- [7] P. Buneman, J. Cheney, and S. Vansummeren. On the expressiveness of implicit provenance in query and update languages. *ACM Trans. Database Syst.*, 33(4), 2008.
- [8] L. Chang, J. X. Yu, and L. Qin. Query ranking in probabilistic XML data. In *EDBT*, pages 156–167, 2009.
- [9] A. P. Chapman, H. V. Jagadish, and P. Ramanan. Efficient provenance storage. In *SIGMOD*, pages 993–1006, 2008.
- [10] J. Cheney, A. Ahmed, and U. A. Acar. Database queries that explain their work. *CoRR*, abs/1408.1675, 2014.
- [11] J. Cheney, L. Chiticariu, and W. C. Tan. Provenance in databases: Why, how, and where. *Foundations and Trends in Databases*, 1(4):379–474, 2009.
- [12] S. Cohen and B. Kimelfeld. Querying parse trees of stochastic context-free grammars. In *ICDT*, pages 62–75, 2010.
- [13] D. Cohn and R. Hull. Business artifacts: A data-centric approach to modeling business operations and processes. *IEEE Data Eng. Bull.*, 32(3):3–9, 2009.
- [14] S. B. Davidson and J. Freire. Provenance and scientific workflows: challenges and opportunities. In *SIGMOD*, pages 1345–1350, 2008.
- [15] D. Deutch, A. Gilad, and Y. Moskovitch. selp: Selective tracking and presentation of data provenance. In *ICDE*, pages 1484–1487, 2015.
- [16] D. Deutch, C. Koch, and T. Milo. On probabilistic fixpoint and markov chain query languages. In *PODS*, pages 215–226, 2010.
- [17] D. Deutch, T. Milo, S. Roy, and V. Tannen. Circuits for datalog provenance. In *ICDT*, pages 201–212, 2014.
- [18] D. Eppstein. Finding the k shortest paths. *SIAM J. Comput.*, 28(2):652–673, 1998.
- [19] R. Fink, L. Han, and D. Olteanu. Aggregation in probabilistic databases via knowledge compilation. *PVLDB*, 5(5):490–501, 2012.
- [20] I. Foster, J. Vockler, M. Wilde, and A. Zhao. Chimera: A virtual data system for representing, querying, and automating data derivation. *SSDBM*, pages 37–46, 2002.
- [21] N. Fuhr. Probabilistic datalog: a logic for powerful retrieval methods. In *SIGIR*, pages 282–290, 1995.
- [22] <http://www.cs.tau.ac.il/~danielde/selpFull.pdf>.
- [23] L. A. Galárraga, C. Teflioudi, K. Hose, and F. M. Suchanek. Amie: association rule mining under incomplete evidence in ontological knowledge bases. In *WWW*, pages 413–422, 2013.
- [24] F. Geerts and A. Poggi. On database query languages for k-relations. *J. Applied Logic*, 8(2):173–185, 2010.
- [25] B. Glavic and G. Alonso. Perm: Processing provenance and data on the same data model through query rewriting. In *ICDE*, pages 174–185, 2009.
- [26] B. Glavic, G. Alonso, R. J. Miller, and L. M. Haas. TRAMP: understanding the behavior of schema mappings through provenance. *PVLDB*, 3(1):1314–1325, 2010.
- [27] B. Glavic, R. J. Miller, and G. Alonso. Using sql for efficient generation and querying of provenance information. In *In Search of Elegance in the Theory and Practice of Computation*, pages 291–320. Springer, 2013.
- [28] B. Glavic, J. Siddique, P. Andritsos, and R. J. Miller. Provenance for data mining. In *Tapp*, 2013.
- [29] T. J. Green, G. Karvounarakis, and V. Tannen. Provenance semirings. In *PODS*, 2007.
- [30] D. Hull et al. Taverna: a tool for building and running workflows of services. *Nucleic Acids Res.*, 34:729–732, 2006.
- [31] <http://www.iris-reasoner.org>.
- [32] Z. G. Ives, A. Haeberlen, T. Feng, and W. Gatterbauer. Querying provenance for ranking and recommending. In *TaPP*, 2012.
- [33] A. K. Jha and D. Suciu. Probabilistic databases with markovviews. *PVLDB*, 5(11):1160–1171, 2012.
- [34] G. Karvounarakis, Z. G. Ives, and V. Tannen. Querying data provenance. In *SIGMOD*, pages 951–962, 2010.
- [35] B. Kenig, A. Gal, and O. Strichman. A new class of lineage expressions over probabilistic databases computable in p-time. In *SUM*, pages 219–232, 2013.
- [36] B. Kimelfeld, Y. Kosharovsky, and Y. Sagiv. Query evaluation over probabilistic XML. *VLDB J.*, 18(5):1117–1140, 2009.
- [37] B. Kimelfeld and Y. Sagiv. Matching twigs in probabilistic XML. In *VLDB*, pages 27–38, 2007.
- [38] D. E. Knuth. A generalization of dijkstra’s algorithm. *Inf. Process. Lett.*, 6(1):1–5, 1977.
- [39] J. Li, C. Liu, R. Zhou, and W. Wang. Top-k keyword search over probabilistic XML data. In *ICDE*, pages 673–684, 2011.
- [40] B. T. Loo et al. Declarative networking: language, execution and optimization. In *SIGMOD*, pages 97–108, 2006.
- [41] A. Meliou, W. Gatterbauer, and D. Suciu. Reverse data management. *PVLDB*, 4(12):1490–1493, 2011.
- [42] A. Meliou and D. Suciu. Tiresias: the database oracle for how-to queries. In *SIGMOD*, pages 337–348, 2012.
- [43] P. Missier, N. W. Paton, and K. Belhajjame. Fine-grained and efficient lineage querying of collection-based workflow provenance. In *EDBT*, pages 299–310, 2010.
- [44] B. Ning, C. Liu, and J. X. Yu. Efficient processing of top-k twig queries over probabilistic XML data. *World Wide Web*, 16(3):299–323, 2013.
- [45] F. Niu, C. Zhang, C. Re, and J. W. Shavlik. Deepdive: Web-scale knowledge-base construction using statistical learning and inference. In *VLDS*, pages 25–28, 2012.
- [46] D. Olteanu and J. Zavodny. Factorised representations of query results: size bounds and readability. In *ICDT*, pages 285–298, 2012.
- [47] R. Perera, U. A. Acar, J. Cheney, and P. B. Levy. Functional programs that explain their work. In *SIGPLAN*, pages 365–376, 2012.
- [48] M. Richardson and P. Domingos. Markov logic networks. *Machine Learning*, 62(1-2):107–136, 2006.
- [49] R. Ronen and O. Shmueli. Automated interaction in social networks with datalog. In *CIKM*, pages 1273–1276, 2010.
- [50] S. Roy and D. Suciu. A formal approach to finding explanations for database queries. In *SIGMOD*, pages 1579–1590, 2014.
- [51] O. Shmueli and S. Tsur. Logical diagnosis of LDL programs. *New Generation Comput.*, 9(3/4):277–304, 1991.
- [52] Y. L. Simmhan, B. Plale, and D. Gannon. Karma2: Provenance management for data-driven workflows. *Int. J. Web Service Res.*, 5(2):1–22, 2008.
- [53] F. M. Suchanek, G. Kasneci, and G. Weikum. Yago: a core of semantic knowledge. In *WWW*, pages 697–706, 2007.
- [54] D. Suciu, D. Olteanu, C. Ré, and C. Koch. *Probabilistic Databases*. Synthesis Lectures on Data Management. Morgan & Claypool Publishers, 2011.
- [55] Prov-overview, w3c working group note. <http://www.w3.org/TR/prov-overview/>, 2013.